

DOWNLOADING AND INSTALLING OSLO-EDU

1. Downloading OSLO EDU

- Using an internet browser access the Lambda Research Corporation website at <http://www.lambdaresearch.com>
- Click on the panel **Optics Software for Education** at the top of the page under the photos.



- A new page will open.

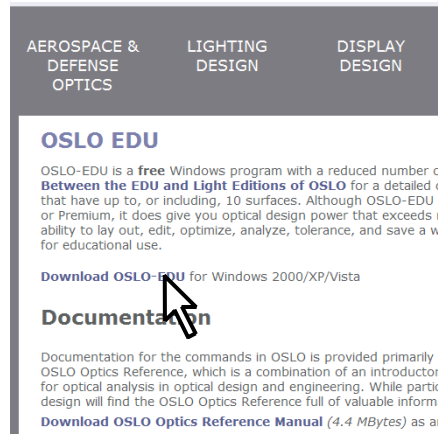
- Under the heading **Optics Software for Education** there is a line which reads **You can use our free version of OSLO – EDU.**



- Click on **Download it here.**

- The page which opens is headed **OSLO EDU**

- You will notice that there is a link to download the **OSLO Optics Reference Manual** (.4 Mb). You can come back to that later, as the manual is worth having. It is valid for all versions of OSLO, and is free.



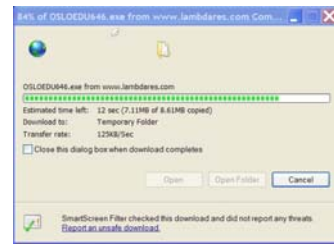
- Click on **Download OSLO-EDU for Windows 2000/XP/Vista.**

- A security warning will appear, asking if you want to run or save the installation file **OSLOEDU646.exe**. Click on **Run** to allow it.

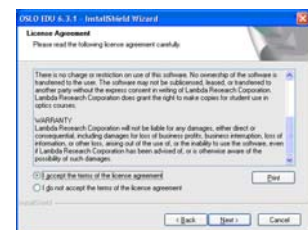


2. Installing OSLO EDU in a Windows environment

- Run the installation file **OSLOEDU646.exe**. The progress of the download will be displayed in a window like that shown here.
 - A security warning window will come up. Click on **RUN**.
 - Once installation begins, left-click on **Next>**
 - Read the License Agreement and left-click on:
- ☉ **I accept the terms of the license agreement**



- Left-click on **Next>**
- Select an appropriate installation location. The default directory for OSLO EDU 6.4 (for example) is **C:\Program_Files\OSLO\EDU64**. This, however, is not ideal if you do not have read-write permission to that directory. If you do not have administrator status on your computer, either show the administrator the note below or choose another location.



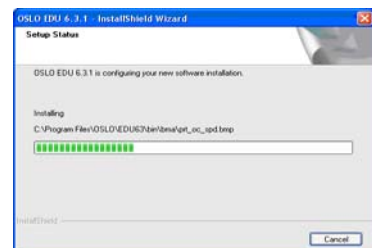
- Left-click on **Next>**

[Note to system administrator: The user requires read/write permission for files and directories in the **C:\Program_Files\OSLO\EDU6x\private** directory, particularly the **\len \ccl** and **\scp** sub-directories]

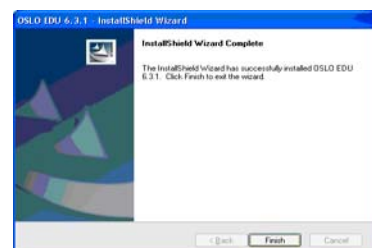
- Begin the installation. Left-click on **Install>**



- Wait for the program to be set up on your computer.
- Once the installation has completed successfully, left-click on **Finish**.



- You may remove or modify the program installation from the "Add or Remove Programs" tool found in the Windows Control Panel.



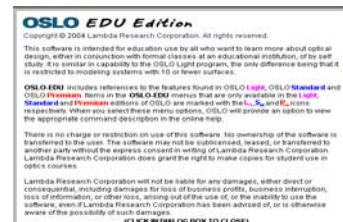
3. Running OSLO EDU

To run OSLO EDU:

- EITHER
 - o Click on the shortcut icon on the desktop in the Windows desktop,
- OR
 - o Click on **Start ► All Programs ► OSLO EDU Edition ► OSLO EDU Edition 6x**
- OR
 - o Locate the .exe file in **C:\Program Files\OSLO - for example osloedu.exe**. (In some installations the directory name is Lambda Research/OSLO).



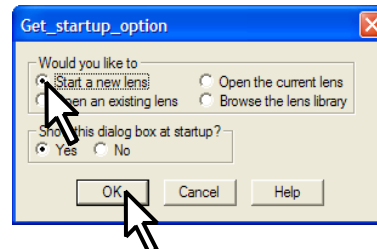
- The program opens with an introductory dialog box. Click anywhere in the box to close it.
- If a message about re-building the CCL database appears, click on **OK**



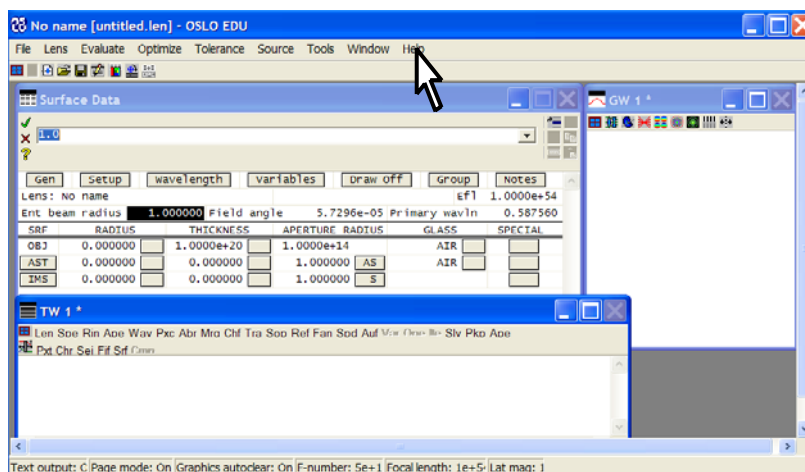
- The “Tip of the Day” is a useful tutorial for new users. Click on **Close**. Alternatively it can be suppressed permanently by removing the tick from the box in the bottom left corner.
- The **Get_startup_option** window opens.



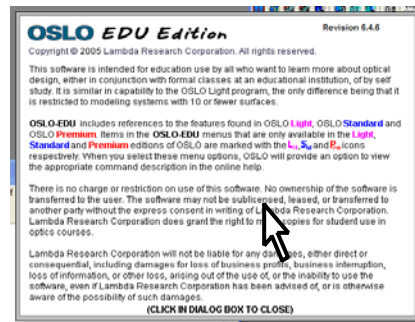
- Choose the option: **Start a new lens** and click on **OK**



- The OSLO main window should look similar to that shown in the diagram.



- In the headers, click on **Help**. The dialog box which opens gives the revision number of OSLO EDU in the top right hand corner.
- Click anywhere in the box to close it.



4. Compiling the CCL libraries

- In the headers, click on **Tools**.
- Click on **Compile CCL ...**
- In the command window, under the heading **Select compile access**, select **Private** and click on the green tick mark.
- Accept the default option **ALL** and click on the green tick mark.
- Accept the default option **-D_OSLO_EDU_ -D_OSLO_LIGHT_ -D_OPENGL_GRAPHICS** and click on the green tick mark.
- Repeat everything in this section for the **Public** directory.
- Two successful compilation messages should appear as shown.
- OSLO EDU is now ready for use.

